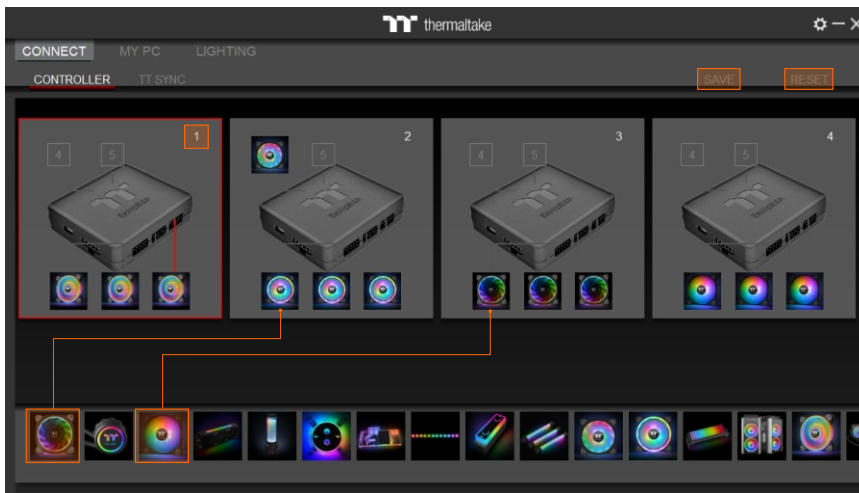


# TT RGB PLUS 2.0 User Manual

OS compatibility: Windows 10

Please download TT RGB PLUS 2.0 from Thermaltake's Official website.  
<https://www.thermaltake.com/downloads>

## CONNECT

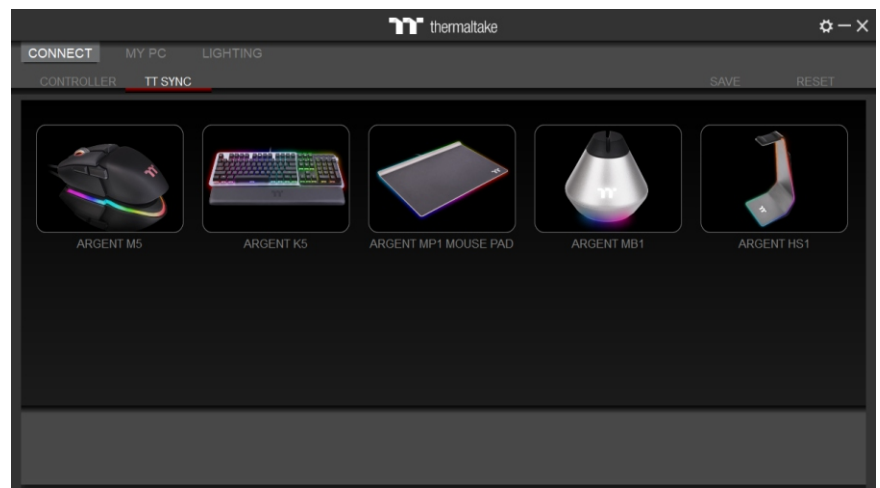


### CONTROLLER

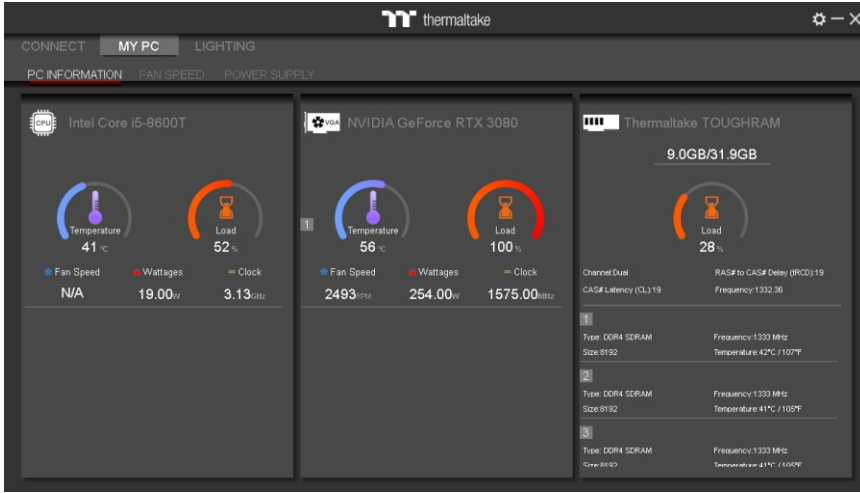
- Drag & drop to pair the liquid cooling products and case fans.
- Click the controller port to make the products' LEDs glow red lighting to pair.
- If you click the controller port without red lighting effect, the controller port is empty.
- Show the controller DIP number.
- SAVE: Save the controller pairing settings.
- RESET: Reset the controller pairing.

### TT SYNC

- Sync RGB lighting for TT gaming products and third party.
- If user cant find product on this page, please check if the USB driver is installed correctly.



# MY PC



## PC INFORMATION

### Show PC Information

- CPU Information: Temperature, Load, Fan Speed, Wattages, Clock.
- GPU Information: Temperature, Load, Fan Speed, Wattages, Clock (Supports SLI).
- Memory Information: Channel, tRCD, CL, Frequency, Type, Temperature, Size.
- Sensors: Show W5 / W6 / W7 Plus / MX1 / TF2 coolant liquid temperature and flow rate.

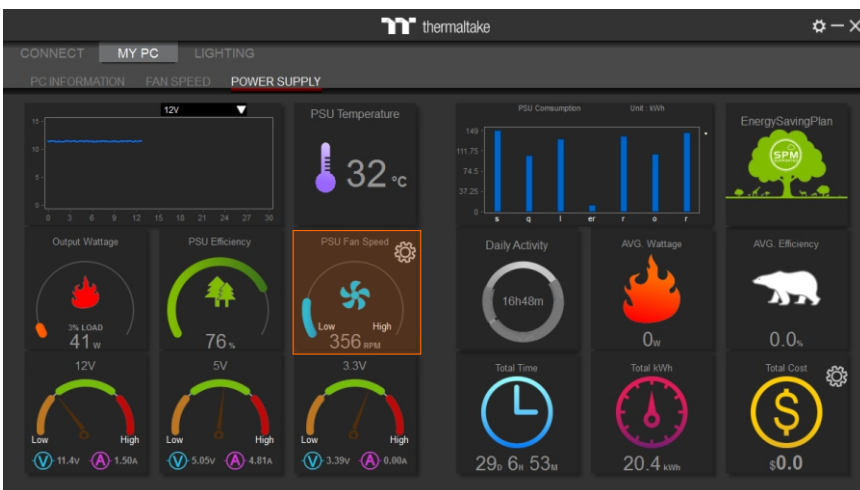
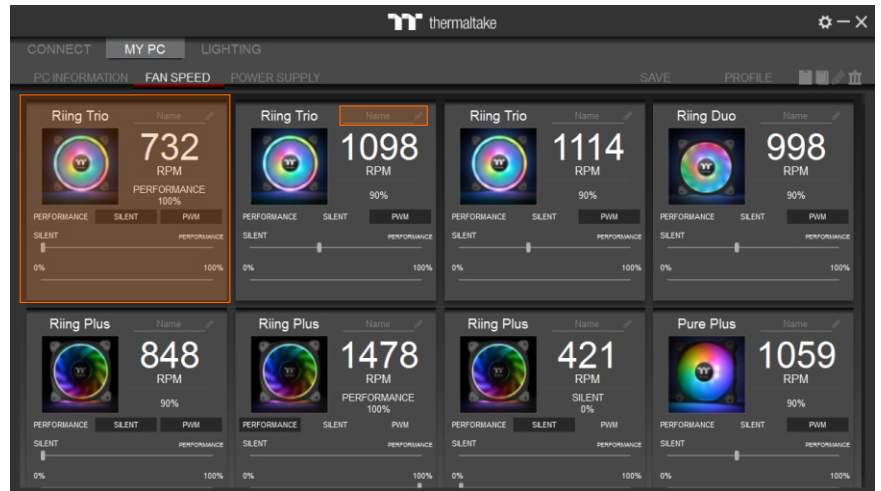
**Q** Why doesn't the fan speed, wattage, and temperature data of certain CPU's, GPU's and memory, display?

**A** The fan speed, wattage, and temperature data of certain CPU's, GPU's and memory fails to display due to product design variances of individual manufacturers (e.g.: Intel, AMD, NVIDIA or motherboard manufacturers).

## FAN SPEED

### Case Fan Speed Information and PWM Performance Settings

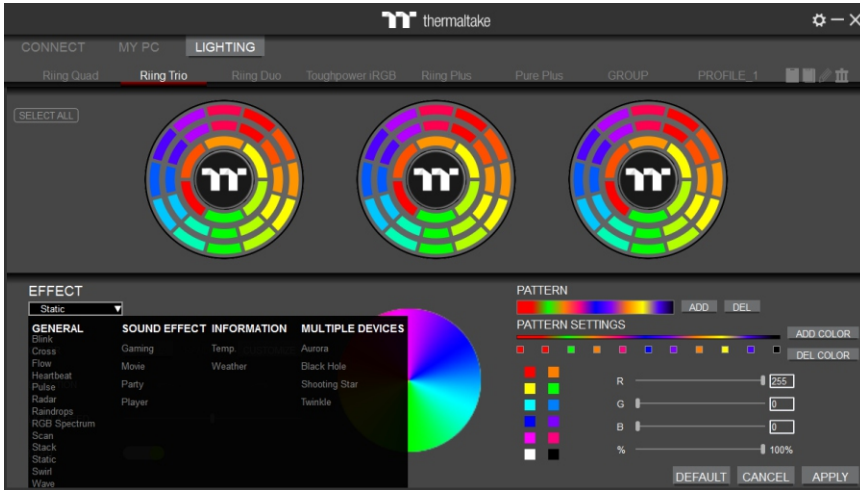
- PERFORMANCE: 0% → 100% (1500rpm.)
- SILENT: 0% (300~500 rpm.)
- PWM: Set PWM silent (50%) to PWM performance (100%).
- NAME: Edit the case fan name.



## POWER SUPPLY

- If you've installed the iRGB DPS G series, the power supply information will be displayed here.
- PSU Fan Speed: Set power fan silent, performance, zero and customize.
- More software information about power supply, please refer to SPM website. <https://dps.thermaltake.com/>

# LIGHTING



Select 23 Lighting Effects.

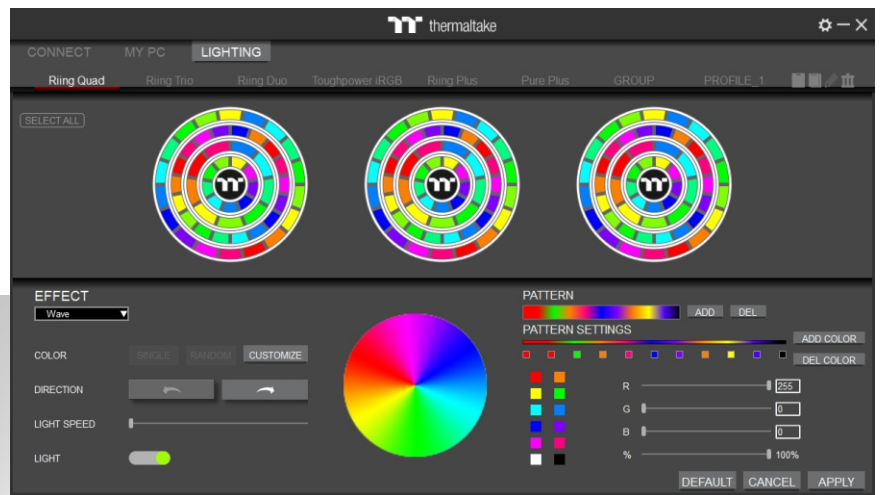
- GENERAL
- SOUND EFFECTS
- INFORMATION
- MULTIPLE DEVICES

Preview and Set Products Lighting Effects



SINGLE

CUSTOMIZE



1. Click the TT logo to select all LEDs
2. COLOR
  - SINGLE: Select single ring to change color.
  - RANDOM: Random light show.
  - CUSTOMIZE: Set up a single LED color.
3. DIRECTION
  - Clockwise and counter-clockwise.
4. LIGHTING SPEED
  - Set up effect speed.
5. LIGHT
  - Turn on and turn off.

6. RGB SETTINGS
  - Color palette.
  - Quick color selection.
  - RGB value setting.
7. PATTERN
  - Set up the color pattern ring.
8. PROFILE
  - NEW: Add new profile.
  - COPY: Copy the profile.
  - EDIT: Edit the profile name.
  - DELETE: Delete profile.

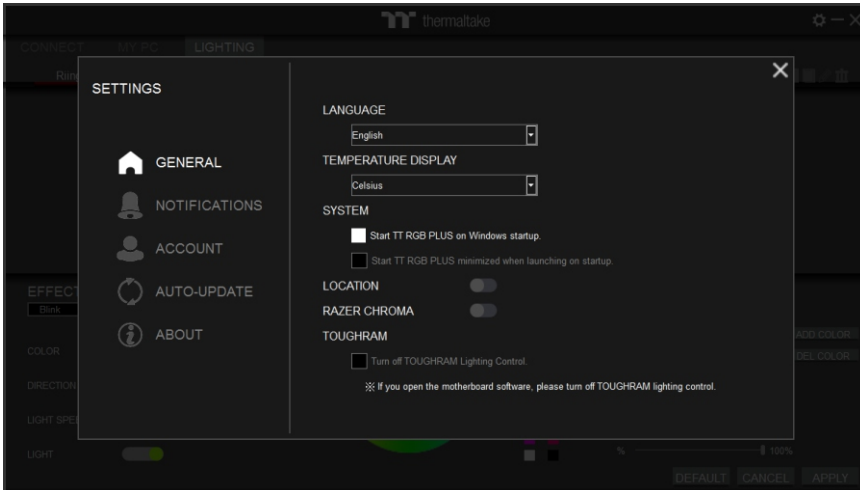
9. DEFAULT
  - Reset the lighting effects.
10. CANCEL
  - Unselect all.
11. APPLY
  - Execute and store lighting effects.
12. SELECT ALL
  - Click to select all products' LEDs.



## GROUP

- Select products to synchronize lighting effects. For example, sync lighting with Riing Trio, Pure Plus and ARGENT K5 keyboard.
- Synchronize functions: COLOR, DIRECTION, LIGHT SPEED, LIGHT.

# SETTINGS



## GENERAL

### LANGUAGE

- English/繁體中文/简体中文 /Français/Deutsch/日本語/한국어/Русский /Spanish /ไทย

### TEMPERATURE

- Celsius / Fahrenheit

### SYSTEM

- Start TT RGB PLUS on Windows startup.
- Start TT RGB PLUS minimized when launching on startup.

### LOCATION

- Allow Location.

### RAZER CHROMA

- Allow Razer chroma lighting sync.

### TOUGHRAM

- If you open the motherboard software, please turn off TOUGHRAM lighting control.

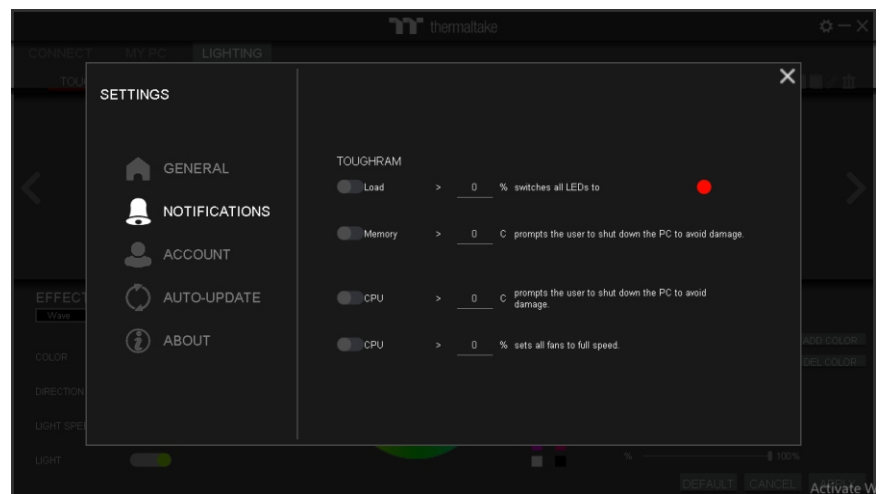
## NOTIFICATIONS

### TOUGHRAM

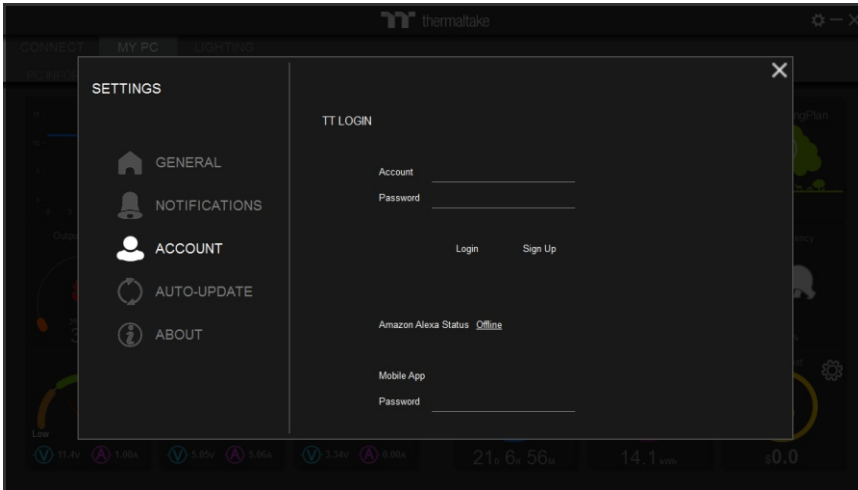
- Set the percentage of TOUGHRAM load greater than switches all LEDs to custom color.
- Setting the temperature of TOUGHRAM prompts user to shut down PC to avoid damage.
- Setting the temperature of CPU prompts user to shut down PC to avoid damage.
- Set the percentage of CPU load greater than makes all fans to full speed.

### POWER SUPPLY

- Turn off the PSU warning alert.



# SETTINGS



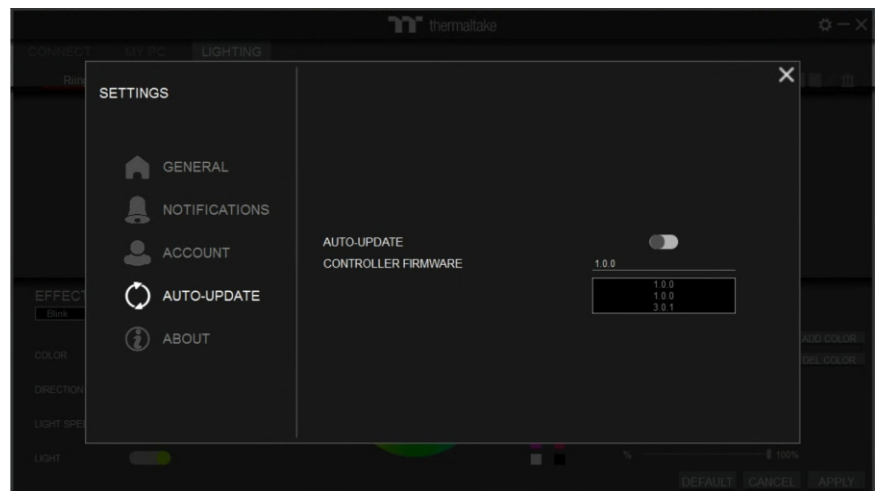
## ACCOUNT

### TT LOGIN

- Login TT account to upload Digital Power Supply data.
- Amazon Alexa Status.

## AUTO-UPDATE

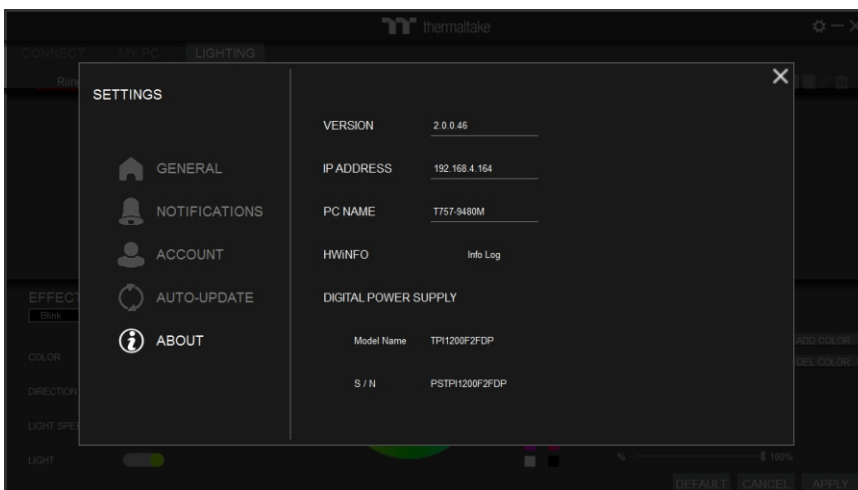
- Automatic update switch
- Controller firmware



## ABOUT

### TT RGB PLUS Client App Information

- VERSION
- IP ADDRESS
- PC NAME
- HWINFO: Hardware information log
- DIGITAL POWER SUPPLY: Model Name and S / N.



# TT RGB PLUS Q&A

**Q** What operating systems are supported by the TT RGB PLUS PC Client software?

**A** OS compatibility: Windows 10  
TT RGB PLUS official download link: <https://www.thermaltake.com/downloads>

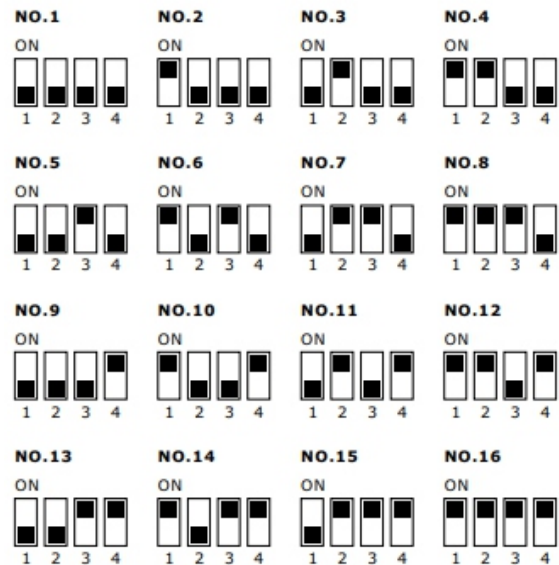
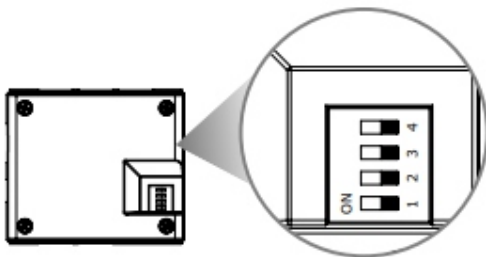
**Q** What's different with TT RGB PLUS 1.0 and 2.0?

**A** TT RGB PLUS 2.0 integrates TT products in one software: Liquid Cooler, Case fan, Power Supply & Memory.

**!** Users can only install one version of TT RGB PLUS 1.0 or 2.0.

**Q** How to set controller number?

**A** Set the DIP switch on the back side of the controller to assign the number of the controller. TT RGB PLUS can support 16 controllers.



**Q** How to reset controller settings?

**A** Please refer to the TT RGB PLUS user manual A-1.

**Q** Cannot find product to pair?

**A** Please check the product is correctly inserted the controller port.

**Q** Cannot find controller?

**A** Check the controller is correctly inserted the motherboard USB port.  
Check whether the 4-pin power cable is connected to too many controllers.  
Turn off computer power and restart.

# TT RGB PLUS Q&A

**Q** Why doesn't the fan speed, wattage, and temperature data of certain CPU's, GPU's and memory display?

**A** The fan speed, wattage, and temperature data of certain CPU's, GPU's and memory's does not display due to product design variances of individual manufacturers (e.g.: Intel, AMD, NVIDIA or motherboard manufacturers).

**Q** How to set fan speed?

**A** Please refer to the TT RGB PLUS user manual B-2.

**Q** How to edit the case fan name?

**A** Please refer to the TT RGB PLUS user manual B-2.

**Q** How to set profile?

**A** Please refer to the TT RGB PLUS user manual C-8.

**Q** How to sync all products lighting effects?

**A** Please refer to the TT RGB PLUS user manual C-13.

**Q** How to get TT RGB PLUS hardware information log?

**A** SETTINGS >> ABOUT >> HWINFO >> Info Log

The screenshot displays the TT RGB PLUS software interface. On the left, the 'SETTINGS' menu is visible with options: GENERAL, NOTIFICATIONS, ACCOUNT, AUTO-UPDATE, and ABOUT. The 'ABOUT' section is expanded, showing 'HWINFO' selected with an 'Info Log' button. The main area displays hardware information:

VERSION	2.0.0.46
IP ADDRESS	192.168.4.164
PC NAME	T757-9480M
DIGITAL POWER SUPPLY	
Model Name	TP1200F2FDP
S / N	PSTP1200F2FDP

On the right, a window titled 'TTRGBPlus' displays a detailed hardware information log:

```
Write Rate = 0.189
Total Activity = 6,798
Read Total = 380728
Write Total = 398343
Read Total = 380728
Write Total = 398342
-----Battery: Hewlett-Packard
Primary-----
Battery Voltage = 16.444
Remaining Capacity = 29,393
Charge Level = 98.4624
-----Network: Intel I218-LM (Clarkville ULT) Network
Adapter-----
Total DL = 2204.02
Total UP = 3007.49
Current DL rate = 10.4953
Current UP rate = 7.12273
-----Network: Intel Dual Band Wireless-N 7260 BGN 2x2 HMC
WiFi Adapter-----
Total DL = 400.188
Total UP = 12.9656
Current DL rate = 1.72465
Current UP rate = 0.154093
-----Windows Hardware Errors
(WHEA)-----
-----MEMORY Date-----
-----MEMORY Index-----
Manuf: SK Hynix
Part#: HMT41GS6BFR8A-PB
Size: 8192
Type: DDR3 SDRAM
Type2: SO-DIMM
Speed: 800
-----PC Date-----
Chipset: Intel Lynx Point-LP (Premium)
Memory Type:
Memory Channel: 1
Memory Tcas: 11
Memory Clock: 798.161
Memory Trst: 11
```

# TT RGB PLUS Q&A

**Q** How to get TT RGB PLUS debug log?

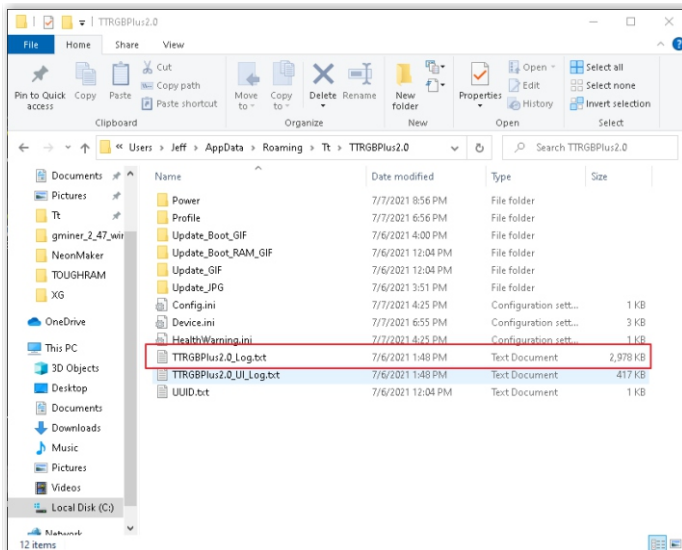
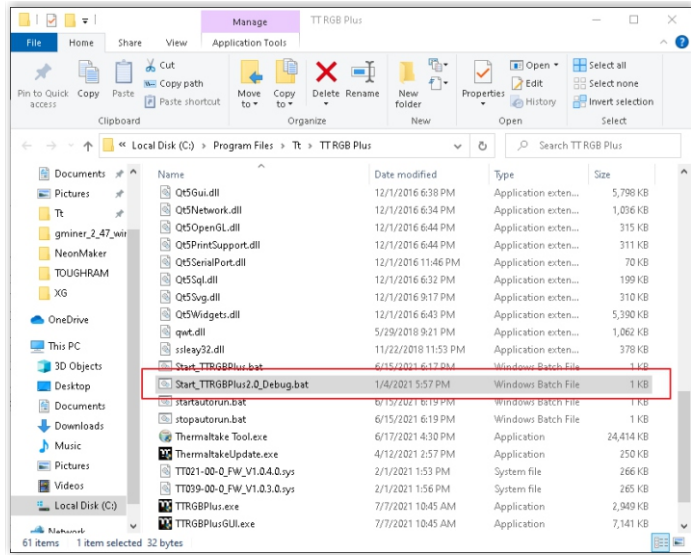
**A** Ensure TT RGB PLUS software was closed.

Open the installation folder

**C:\Program Files\Tt\TT RGB PLUS**

Find

**"Start\_TTRGBPlus2.0\_Debug.bat"** file and double click it.

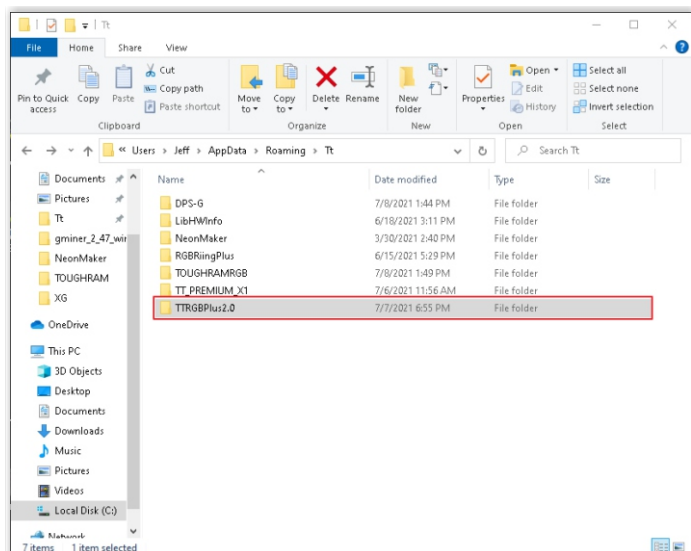


Open the hidden folder and check the log file **"TTRGBPlus2.0\_Log.txt"**

**C:\Users\user\AppData\Roaming\Tt\TTRGBPlus2.0**

Send the TTRGBPlus2.0 folder to Thermaltake team.

**C:\Users\user\AppData\Roaming\Tt\TTRGBPlus2.0**

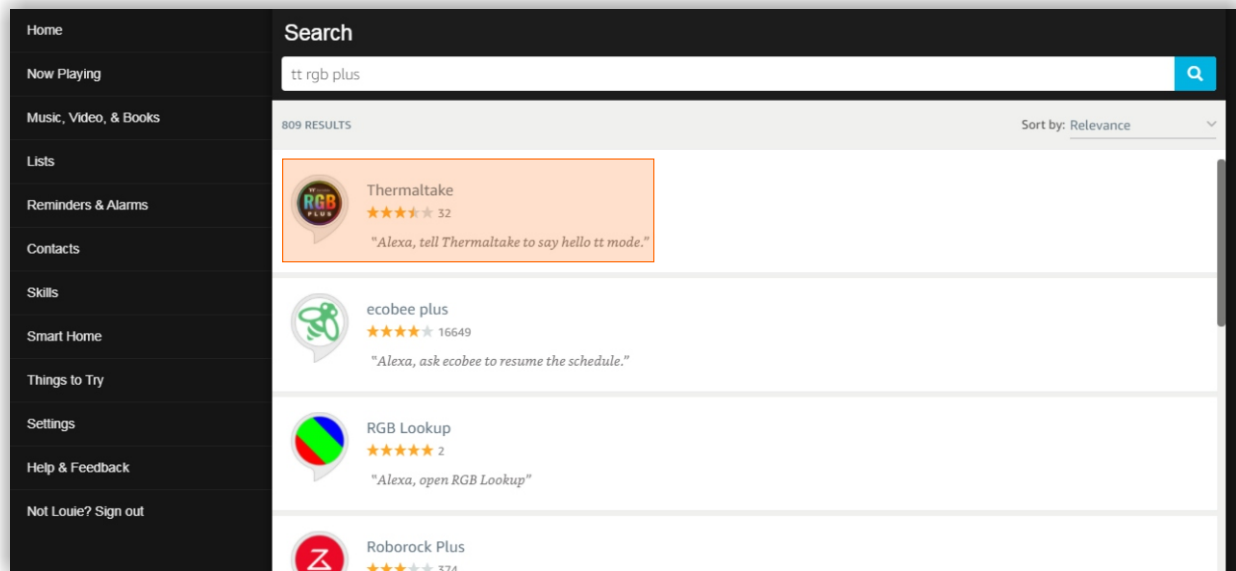




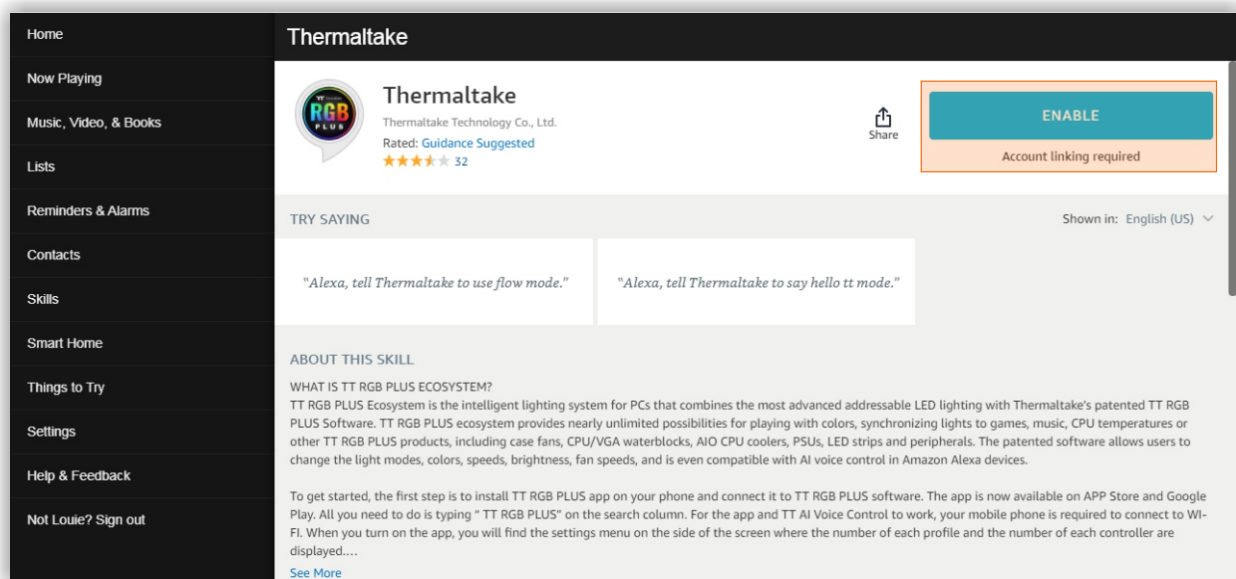
# TT RGB PLUS Q&A

## Q How to use Amazon Alexa?

A Go to <https://alexa.amazon.com/spa/index.html#cards> and log in use an Amazon account. Click "Skills" to search "TT RGB PLUS" and select this skill.



Click "ENABLE"

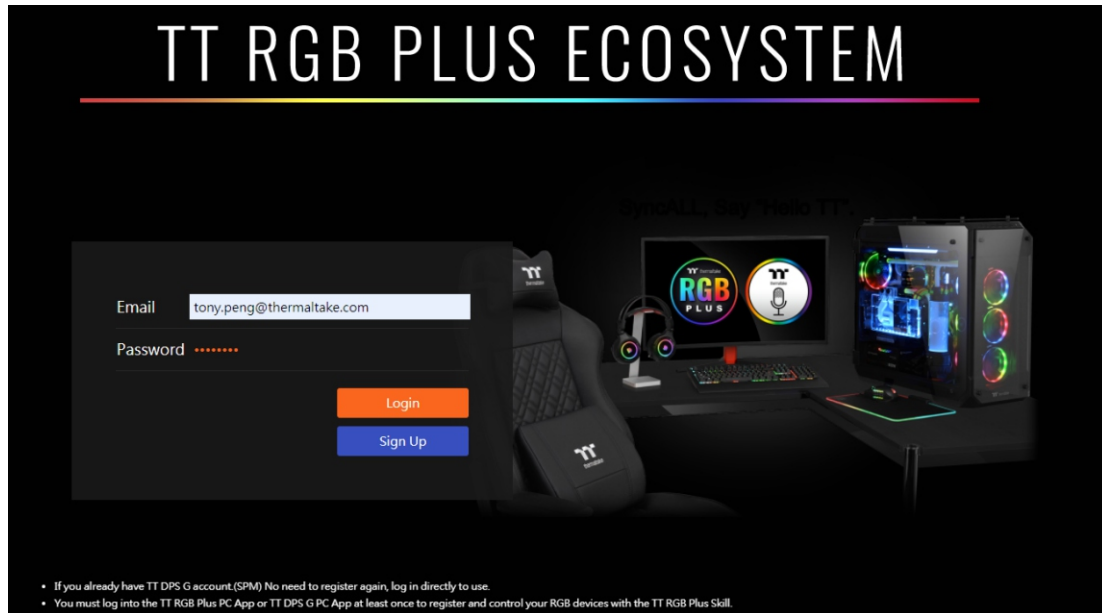


Continued on next page ▼

# TT RGB PLUS Q&A

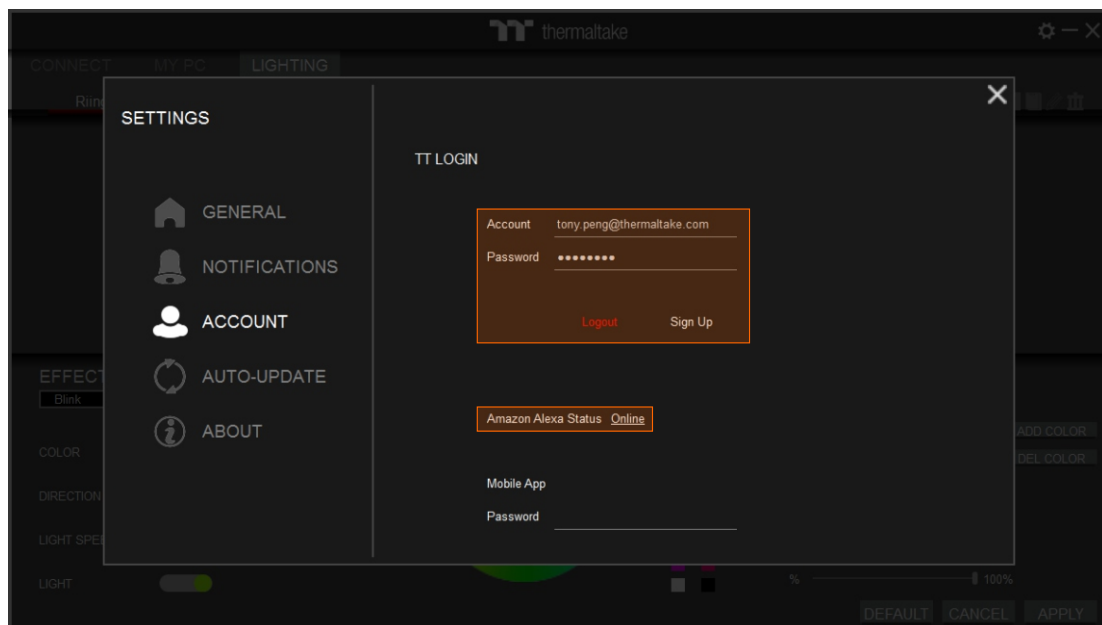
"Login" or "Sign Up" the TT account

- If you already have a TT DPS G (SPM) account, there is NO need to register again. Please log in using your existing TT DPS G account.
- You must log into the TT RGB PLUS PC App at least once to register and control your RGB devices with the TT RGB Plus Skill.



Within TT RGB PLUS Software, Click the gear icon to enter the settings menu and Select "ACCOUNT", then use your created or existing account to log in.

Once the login is successful and Alexa is paired, "Online" is displayed near Amazon Alexa Status.



# TT RGB PLUS Q&A

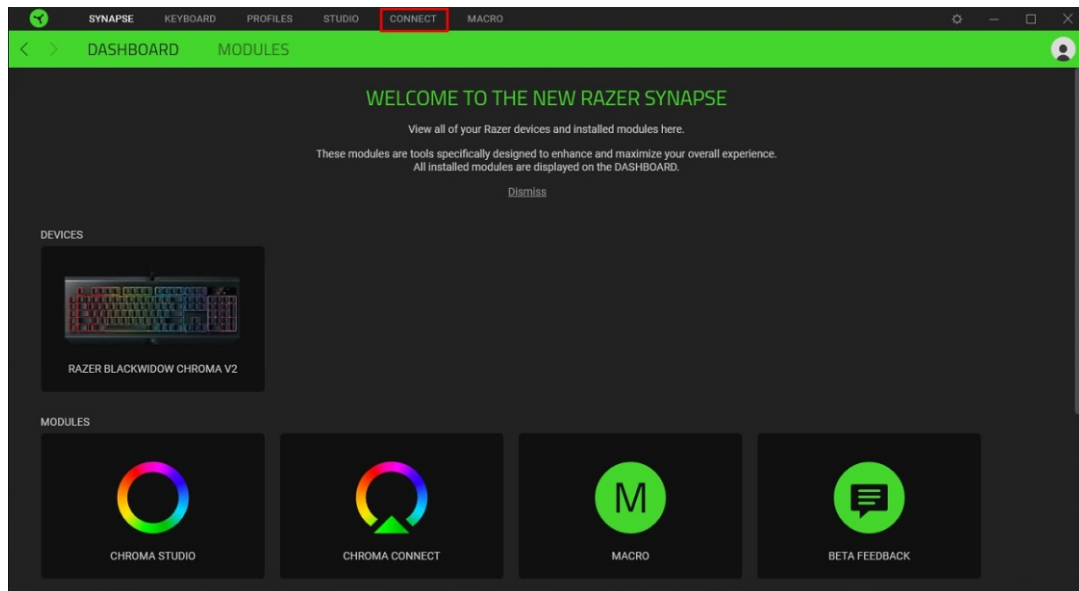
**Q** How to use RAZER CHORMA sync?

**A** Make sure your product has a RAZER CHROMA logo on the website as shown in the picture below.

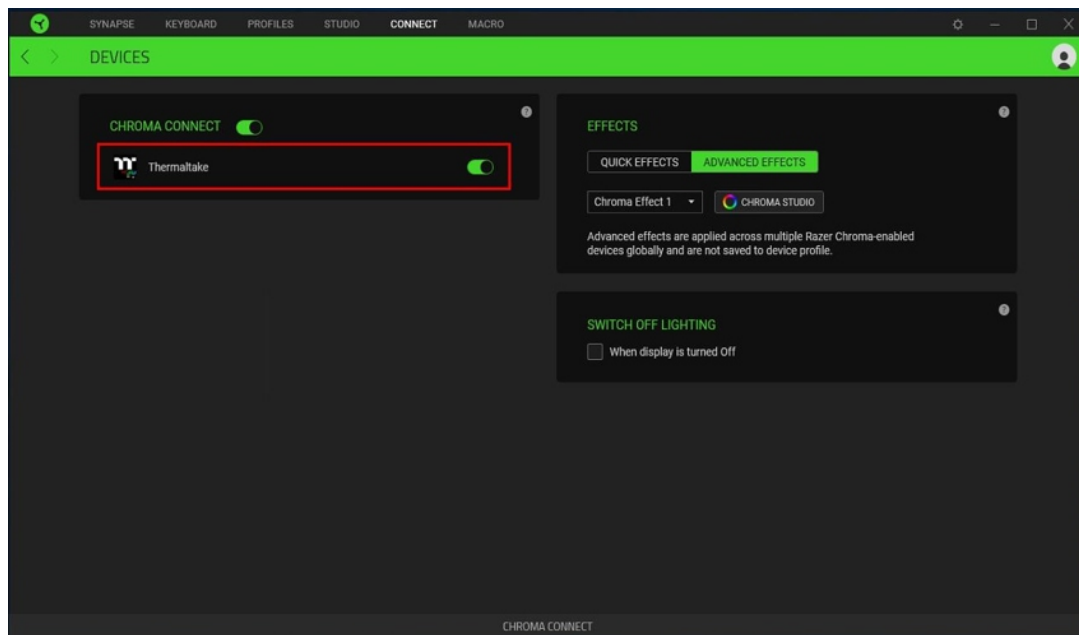


<https://www.razer.com/campaigns/chroma-mania/chroma-collection>  
(Razer products supported list)

Open “RAZER SYNAPSE” and Enable “TT RGB PLUS” Connection



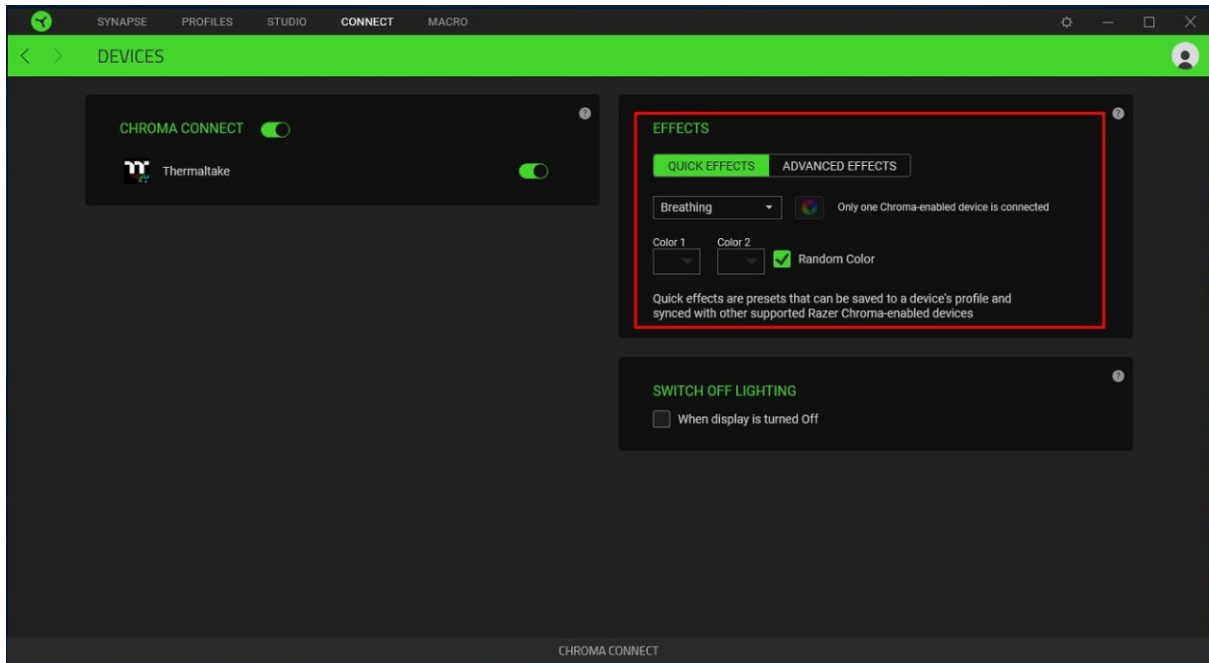
Click “CONNECT” and enable “Thermaltake” label.



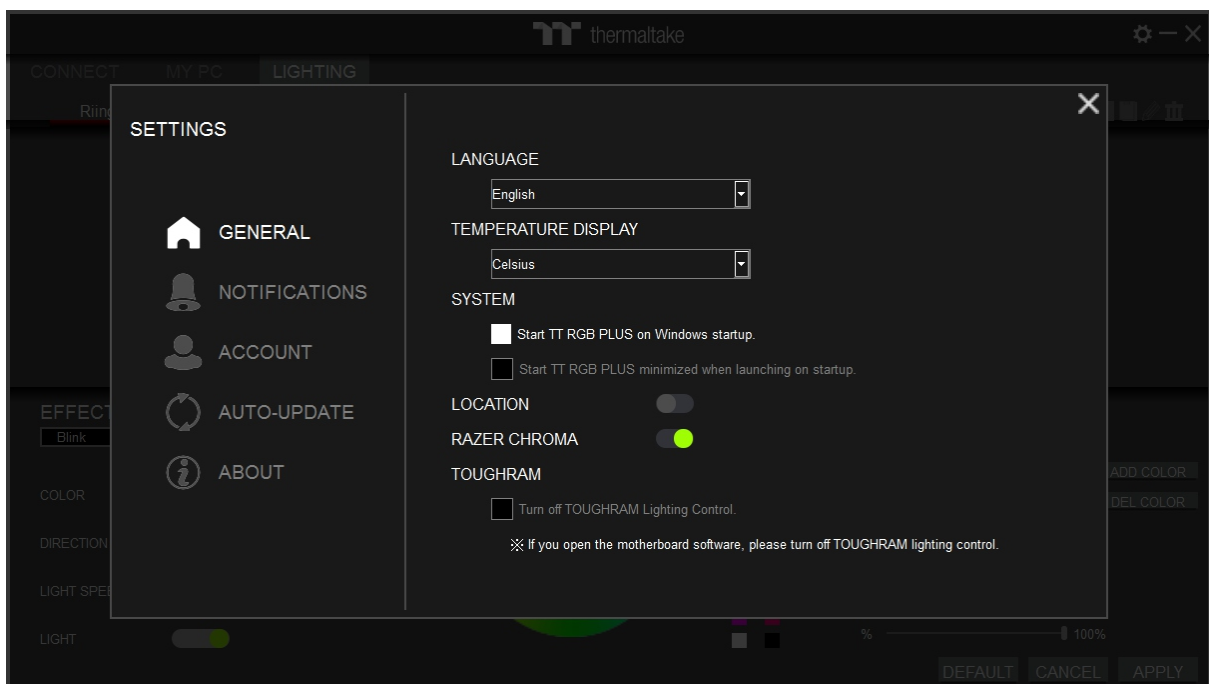
Continued on next page ▼

# TT RGB PLUS Q&A

Set lighting effect. You can customize lighting effects yourself.  
Sync “TT RGB PLUS” with Razer Chroma Effects.



Click gear icon to enter the settings menu and select “GENERAL”, then enable “RAZER CHROMA”.



## TT RGB PLUS supported products.

### Chassis:

- DistroCase™ 350P Mid Tower Chassis.
- View 71 Tempered Glass RGB Plus Edition
- View 21 Tempered Glass RGB Plus Edition
- Level 20
- Level 20 GT RGB Plus
- View 91 Tempered Glass RGB Edition

### Fans:

- Riing Quad RGB Radiator Fan
- Riing Trio RGB Radiator Fan
- Riing Duo RGB Radiator Fan
- Riing Plus RGB Radiator Fan
- Pure Plus RGB Radiator Fan

### AIO Liquid Cooling:

- Floe DX RGB
- Floe Riing RGB
- Floe RC Ultra
- TOUGHLIQUID Ultra

### Custom Liquid Cooling:

- Pacific Lumi Plus
- Pacific W4 Plus CPU Water Block
- Pacific W5 CPU Water Block
- Pacific W6 CPU Water Block (AMD Ryzen Threadripper TR4)

- Pacific W7 Plus CPU Water Block
- Pacific MX1 Plus CPU Water Block
- Pacific MX2 Ultra CPU Water Block
- Pacific VGA Plus GPU Waterblock
- Pacific PR12/22/32-D5 Plus
- Pacific Core P5 DP-D5 Plus Distro-Plate with Pump Combo
- Pacific DP100-D5 Plus Distro-Plate with Pump Combo
- Pacific TF2 Temperature and Flow Indicator
- Pacific CL/RL 360 RGB Radiator
- Pacific RGB Plus Fittings

### Memory:

- TOUGHRAM
- TOUGHRAM RGB
- TOUGHRAM XG RGB
- TOUGHRAM Z-ONE
- TOUGHRAM Z-ONE RGB
- TOUGHRAM RC
- Pacific A1 DDR4 RAM Water Block
- Pacific A2 Ultra Memory Water Block
- Pacific R1 Plus DDR4 Memory Lighting Kit
- Pacific R2 Ultra Memory LCD Monitor Kit

### Power Supply:

- Toughpower iRGB PLUS Series
- Toughpower DPS G RGB Series

## TT SYNC supported Thermaltake gaming products.

### Keyboards:

- TT Premium X1 RGB Gaming Keyboard
- ARGENT K5 RGB Gaming Keyboard
- Level 20 RGB Gaming Keyboard
- Level 20 GT RGB Gaming Keyboard

### Mice:

- NEMESIS SWITCH Optical RGB
- IRIS Optical RGB
- Level 20 RGB Gaming Mouse
- ARGENT M5 RGB Gaming Mouse

### Mouse Pads:

- Level 20 RGB Gaming Mouse Pad
- Level 20 RGB Extended Gaming Mouse Pad
- M900 XXL RGB Mouse Pad
- ARGENT MP1 RGB Gaming Mouse Pad

### Mice Accessories:

- ARGENT MB1 RGB Mouse Bungee

### Headsets:

- CRONOS Riing RGB 7.1
- RIING Pro RGB 7.1 Gaming Headset
- ARGENT H5 RGB 7.1 Gaming Headset

### Headset Accessories:

- E1 RGB Gaming Headset Stand
- ARGENT HS1 RGB Headset Stand

### Gaming Desks:

- Level 20 BattleStation RGB Gaming Desk

## The following products are not supported.

- TT RGB PLUS 2.0 does not support lighting control for Toughpower DPS G Series, Toughpower DPS Series and Smart DPS G Series.
- TT RGB PLUS 2.0 does not support Riing 12/14 RGB Radiator Fan.

## TT RGB PLUS lighting effects supports third-party products.

### ViewSonic:

- ELITE XG240R
- ELITE XG270QC
- ELITE XG270R
- ELITE XG350R-C

### DRAM:

- T-FORCE XCALIBUR RGB DDR4 Memory Module
- T-FORCE DELTA RGB DDR4 Memory Module
- T-FORCE NIGHT HAWK RGB DDR4 Memory Module

### Motherboard:

- MSI Motherboard

### Nanoleaf:

- NanoLeaf Light Panel
- NanoLeaf Canvas